

HTM

TECNOLOGIA DE RESULTADO

HTM
TECNOLOGIA DE RESULTADO

ELEVATE YOUR CLINIC TO THE HIGHEST STANDARD
OF EXCELLENCE WITH HTM EQUIPMENT.
NEW TECHNOLOGIES, EFFICIENCY, DESIGN AND
PROFESSIONAL PERFORMANCE.

(19) 3808-7741
www.htmeletronica.com.br
comercial@htmeletronica.com.br

Av. Rio Nilo, 209 - Jd. Figueira - CEP 13904-380
Amparo, São Paulo, Brasil

📺 /HTMELETR

📷 /htmeletronica

📘 /htmeletronica

Reservamos el derecho de corregir eventuales errores gráficos.
Imágenes meramente ilustrativas. Distribución interna.



YOU BETTER EVERY DAY

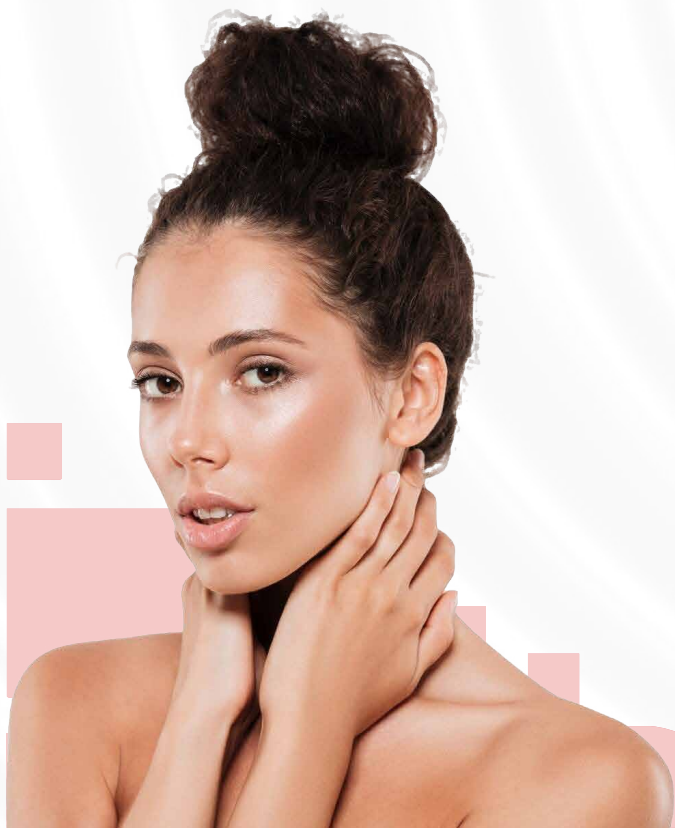
We are a leading industry in the development and manufacture of electro-electronic equipment for the beauty and physiotherapy segment in Brazil. With over 25 years in the market, our competitive advantages are based on the high technology, exclusive design and great efficiency of our products. All equipment is designed and developed in our own factory, with 100% national technology!

Our modern manufacturing structure has 5,000 m², built under the strictest production and environmental responsibility standards. We are constantly expanding, always recognizing and valuing the ethical commitment and well-being of our employees.



Innovating in technology and creating high-quality equipment is our mission. In this path of overcoming, we continue to support and value our resellers, customers and partners with the commitment to offer the market the best and most effective products, integrating scientific knowledge with practicality.

Today, HTM Eletrônica is a leader in innovation, results and safety, parameters that will undoubtedly continue to be with us in the future.



Recovery is a high-intensity electromagnetic field equipment that uses magnetic waves to propagate through tissue, causing them to interact with human tissue, promoting hypertrophy, muscle toning and reduction of localized adiposity;

It has a design that combines beauty and practicality in operation, in addition to having portability as a characteristic;

8-inch Touch Screen Display with all the interactivity of the Pró-Performance system;

It has an INFO feature with a tutorial on how to use the equipment;

Smart Energy: enables individualized operation of applicators;

It has body applicators in flat and anatomical versions, both ergonomic and practical, ensuring perfect coupling in different areas of the body.

It has the option of articulated arms with 3 joints on each arm, to be used with the flat applicator, which allows it to be positioned in the indicated region;

It has the option of a specific pelvic applicator designed to strengthen the pelvic muscles;

It offers ready-made treatments specifically for rehabilitation and pelvic floor, in addition to the option to customize protocols through Free Modes.

Easy-to-use interactive navigation;

Possibility of using up to 2 simultaneous applicators;

18 month warranty;

The most complete on the market with possibilities for selecting protocols with different modes and frequencies;

Voltage: 220V.

Pelvic floor dysfunction
Muscle laxity
Muscle hypertrophy
Urinary incontinence
Reduction in measurements
Muscle toning

ANVISA: N°80212489007

Recovery

Empower

High-intensity electromagnetic field

The Power of the Electromagnetic Field in Functional Recovery and Body Definition.

High-intensity electromagnetic field

Technology in favor of the body and beauty.



It acts in a non-invasive way, inducing muscle contractions at maximum intensity, increasing muscle tone and strength;

Total energy of 7 Teslas - True and real;

10.4" Touch screen display with all the interactivity of the Pró-Performance system;

Microcontroller with fully digital parameter controls;

Exclusive software self-management system remote;

Management of your equipment through IoT Technology, using the HTM Match application;

INFO resource;

Comes with four practical and ergonomic body applicators (two flat and two anatomical), which allow perfect attachment to different body regions;

Optional applicator specifically designed for treating the pelvic floor muscles;

It has the FREE MODE option in each treatment mode, which allows the adjustment of all personalized parameters;

Possibility of using up to 4 simultaneous applicators, with individual intensity adjustments;

It has the Smart Energy system,

Master control safety key;

18 month warranty

Comes with a carrying case;

Voltage: 220V.

Muscle hypertrophy
Urinary incontinence
Reduction in measurements
Muscle toning
Muscle flaccidity
Pelvic floor dysfunctions

ANVISA: N°80212489007



Endolight

High-intensity subdermal laser

Capable of penetrating deeply into tissues due to its high absorption of fat and water, activating collagen remodeling and the metabolic process.

High-intensity subdermal laser with a wavelength of 1470 nm is capable of penetrating deep into tissues due to its high absorption by fat and water, activating collagen remodeling and the metabolic process, resulting in tissue retraction and liquefaction.

With 12W of power, it operates in continuous and pulsed modes, performing precise calculation of energy accumulation.

It features a design that combines beauty and practicality of operation in addition to portability;

7" touch screen display with high touch precision, superior durability and interactive navigation for practical selection of treatment areas.

The Pro Performance system was developed to be intuitive and easy to operate, providing an optimized experience with just a few clicks. Its innovative interface, combined with advanced engineering, ensures perfect synchronization between hardware, software, professional and patient, offering intelligent solutions for high performance with quality and safety.

It has an INFO feature with a tutorial on how to use the equipment;

Power 12W;

Continuous (CW) or pulsed mode with variable parameter adjustments (Ton, Toff, Frequency, Duty and Power);

Pre-programmed protocols;

Possibility of saving new protocols;

Failure notification system via messages;

18-month warranty;

Safety system: laser energy emission is disabled when the pedal is not connected or is connected incorrectly;

Lightweight and portable equipment – Weight 2.5 kg.

1 pair of patient goggles
1 pair of operator goggles
1 fiber connector cleaner
1 foot pedal
1 carrying case
1 power cable
1 power supply
1 lithium-ion battery
1 remote interlock connector

ANVISA: N°80212480030



 **CriUSculpt**

Cryolipolysis

Cryolipolysis
which is a
complete clinic.

It features a design that combines beauty and practicality in operation;

Low frequency ultrasound;

Single Mode;

8" touch screen display;

IoT system via the HTM Match app;

INFO feature;

Exclusive self-management system
remote software;

Comes with a support table, with casters
to facilitate movement;

Includes facial applicator;

It has 2 types of plate applicators
with infinite edge;

It has 5 types of suction applicators;

Fault notification system via messages;

Applicator support on the side for easy access;

Refrigeration system monitoring;

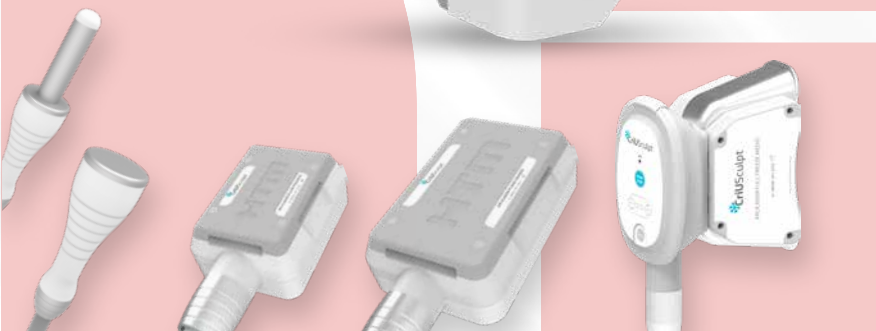
3 languages;

18-month warranty;

1 Facial Applicator
1 Medium Full Freeze Suction Applicator
2 Large Flat Applicators
2 Small Flat Applicators

Localized Adiposity
Cellulite
Sagging Skin

ANVISA: N°80212489008



Ácrus



**Hair removal laser
with Triple Wave applicator
(Alexandrite - 755nm,
Diode - 808nm,
ND - Yag - 1064nm)**

Suitable for all skin phototypes, including tanned skin;

Fast payback on investment;

Intelligent cooling of the Spot - Cryocooling MAXX technology up to -10 degrees - which guarantees greater comfort and safety for the patient;

Flexible treatment mode: Sweeping, sequential and point, ensuring application speed;

Pre-programmed parameters according to phototype, hair density and thickness or user-adjustable option;

Equipment enabled with all the features of the exclusive HTM Match application;

10.4" touch screen display with greater touch precision and high durability;

Pro-performance system with interactive navigation and selection of treatment regions;

INFO menu and QR Code with access to usage and care tutorials to make the most of all the equipment's resources;

Exclusive i-Check equipment integrity system;

Activation mode: pedal (automatic or manual) or applicator (manual);

18-month warranty including optical assembly with no shot limit*;

Low-cost maintenance: no consumables;

Compact and unique design;

Comes with a transport case that adapts to support the equipment and fits into the environment.

EPILATION

ANVISA: N°80212480029

*As long as the instructions described in the instruction manual are followed regarding the application technique, use, maintenance and cleaning.



Ninky

Q-Switched ND-YAG Laser

Q-Switched Nd:YAG EO (electro-optical) laser equipment that emits short pulses of light lasting in the order of nanoseconds (one billionth of a second);

Pre-programmed protocols that facilitate operation;

Portable and practical for operation;

Q-Switched Nd-YAG EO (electro-optical) Laser;

Option of tips with wavelengths of 532nm, 1064nm and 1320nm;

Shot counter per session;

Short pulses of light lasting one billionth of a second;

Ergonomic applicator with trigger button;

Guide light for directing shots;

Available in 3 languages;

Foot pedal for triggering;

Screw-on tips that ensure greater safety;

Frequency: 1 to 10Hz;

220Vac power supply;

Equipment weight: 30kg;

Included accessories

- 1 Applicator
- 1 532nm tip
- 1 1064nm tip
- 1 1320nm tip
- 1 Power cable
- 1 Foot pedal
- 1 Operator's safety glasses
- 1 Patient's safety glasses
- 1 Funnel kit
- Master control key
- Interlock connector

TATTOO REMOVAL;
MICROPIGMENTATION REMOVAL;
DERMAL PIGMENTATION;
BLACK PEEL.

ANVISA: N°80212480032



Light.Pulse

Intense pulsed light

Versatility and high
power in light treatments.

Lamp with 1 million* flashes guarantee;

Spot mode and sweep mode*;

"Crycooling" electronic cooling;

New screen layout and interactive navigation,
with the possibility of saving protocols;

Suggestion of treatment areas;

Hair removal, rejuvenation, acne, wrinkles,
spots, stretch marks and vascular therapy.

ACNE;
ACTINOSENESENCE;
CHRONOSENESENCE;
EPILATION;
STRETCH MARKS;
ROSACEA AND TELANGIECTASIA.

ANVISA: N°80212480021

*The applicator bulb is guaranteed for 1 million shots or 18 months, whichever comes first.

*In hair removal and rejuvenation treatments.

Pluria®

Aurius Plasma

Graphic Display: Responsible for indicating the parameters to be defined for the application of the equipment;

Microcontroller with digital parameter controls;

It has an applicator pen with the possibility of changing the tips;

18 months warranty.

1 Applicator pen

1 Plasmaporation tip for needles

1 Fine-tip Plasmaporation tip

1 Thick-tip Plasmaporation tip

1 Plasmaporation tip with nozzle

1 Plasmaporation tip with sphere

1 Plasmaporation tip with disc

1 Power cable

1 Kit of 20 needles

1 Power cable

SCARS AND ACNE SCARS;
EYELID SAGGING;
BENIGN SKIN LESIONS;
SPOTS;
REJUVENATION.

ANVISA: N°80212489009

Carboxytherapy

Intelligent system for percutaneous and transcutaneous carboxytherapy.



Progressive gas heating and comfort system;

Exclusive Carbo Cupping for non-invasive carboxytherapy;

Pre-programmed protocols and the possibility of saving new ones;

Flow rate up to 400ml/min.;

CELLULITE;
ADIPOSY;
SAGGING SKIN;

ANVISA: N°80212480020

Plasma jet

High intensity and frequency direct or pulsed current



Fluence

Fluence MAXX

LED and Laser

Innovative LED and Laser technology.

LED and Laser

High technology in multi-therapies LED and Laser.

Individual or combined therapies;

Option to include laser pen, LED cluster and LED+Laser cluster;

More than 1,600 protocols*;

Exclusive HTM Smart ID system**;

ACNE;
ACUPUNCTURE - TRANSCUTANEOUS ILIB;
ALOPECIA;
ANALGESIA AND PHYSICAL REHABILITATION;
LOCALIZED FAT AND CELLULITE;
HYDRATION;
LYMPHEDEMA AND LYMPHATIC DRAINAGE;
MELASMA AND REJUVENATION;
TISSUE REPAIR;
PHOTODYNAMIC THERAPY.

ANVISA: N°80212480028

*Depending on the quantity of accessories purchased.

**For 904nm pens.

High technology in LED and Laser multitherapies/individual or combined therapies;

Different models of masks for phototherapy;

New MAXX Cluster options with a larger application area;

5' touch screen display;

Exclusive design;

INFO menu with tutorial on use and care for better use of all the equipment's resources;

Allows for individual selection or combination of different coherent and non-coherent light emitting sources, expanding the range of light spectrum and the scope of treatments;

More than 1,700* pre-programmed protocols and the possibility of recording new ones;

Toposcopic tip on laser pens, allowing to locate acupuncture points;

Exclusive HTM Smart ID system for 904nm pens;

Easy-to-fit, highly durable medical standard plug;

Fire button on the pen and cluster;

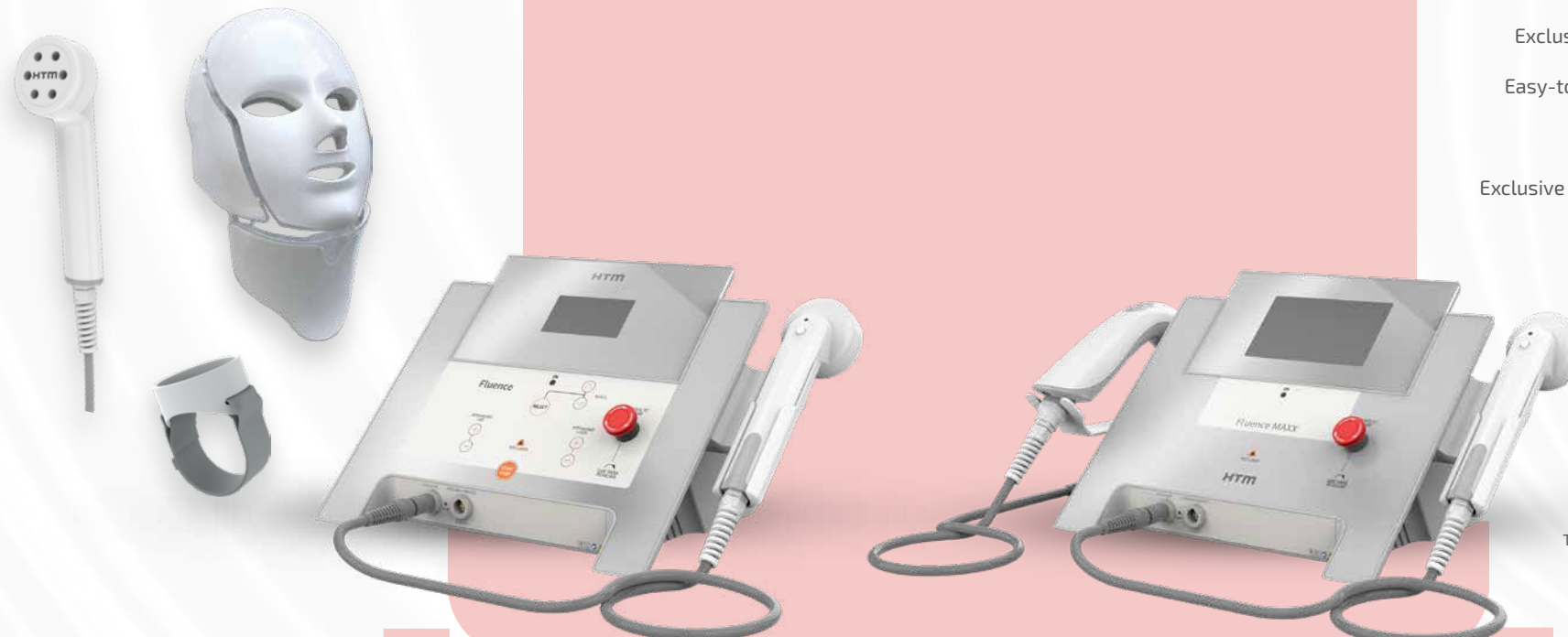
Exclusive bracelet for transcutaneous ILIB technique (optional);

LASER STOP and emergency button;

Laser/LED TEST device;

Full range.

ACNE;	LYMPHATIC DRAINAGE;
ACUPUNCTURE;	LOCALIZED FAT;
ALOPECIA;	MELASMA;
ANALGESIA;	PHYSICAL REHABILITATION;
CELLULITE;	REJUVENATION;
HYDRATION;	TISSUE REPAIR;
TRANSCUTANEOUS ILIB;	PHOTODYNAMIC THERAPY.
LYMPHEDEMA;	



ANVISA: N°80212480028
*Specific for each applicator, depending on the quantity of accessories purchased.

Cluster with exclusive linear distribution;

Exclusive trichology suction cups for hair and eyebrow applications;

High durability medical standard plug;

15 pre-programmed protocols;

ALOPECIA;
HAIR TREATMENTS;
SCALP PATHOLOGIES.

ANVISA: N°80212480026

Clean and modern design;

Possibility of saving individual protocols;

Easy-access front outputs;

"Chip on Glass" graphic display;

Soft touch key;

5 pre-programmed protocols;

Full range (bivolt);

18-month warranty.

Facial drainage
Facial lifting
Skin cleansing
Cell renewal

ANVISA: N°80212480026

Stim Hair



Phototherapy,
vacuum therapy and high
frequency

Platform for
hair treatment.

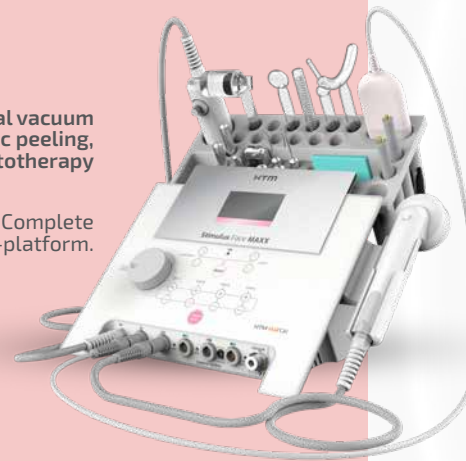
Currents, facial vacuum
therapy, ultrasonic peeling,
high frequency and phototherapy

Complete
facial cross-platform.

Diamond Peeling,
Ultrasonic Peeling,
Vacuum Therapy and High
Frequency

Complete platform
for skin cleansing

Stimulus Face MAXX



HighForce (1000Hz), Russian (2500Hz),
Galvanic, Microgalvanic and MENS;

4 channels for biphasic currents
and 2 channels for polarized currents;

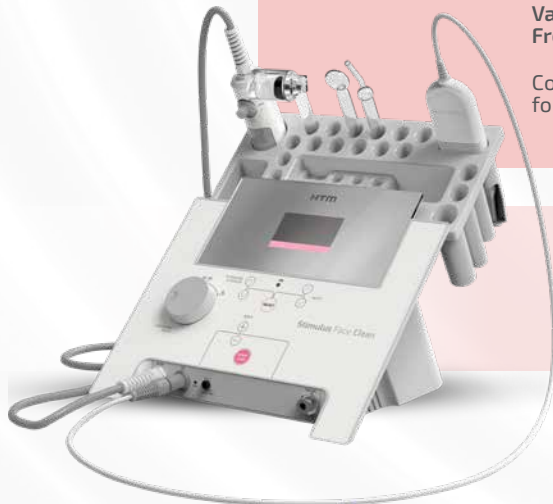
87 pre-programmed protocols;

Highly durable medical standard plug;

MUSCLE STRENGTHENING AND TONING;
FACIAL DRAINAGE AND PEELING;
SKIN CLEANSING AND ACNE TREATMENT;
FACIAL LIFTING AND SKIN PERMEATION OF ACTIVE INGREDIENTS;
HYPERCHROMIA AND CELL RENEWAL;
PHOTODYNAMIC THERAPY.

ANVISA: N°8021280026

Stimulus Face Clean





Vibria[®] MAXX

Ultrasound and therapeutic currents

Exclusive



DUO
MODE

High-performance
platform for simultaneous
therapies and low
frequency cavitation.

Possibility of carrying out individual therapies,
combined therapies and simultaneous therapies -
exclusive DUO MODE;

1MHz and 3MHz body ultrasound with
higher output power: 63W and ERA of
21cm² - FloatingHead[®] Technology;

Low Frequency Ultrasound with 40kHz,
ERA of 10cm² and 30W of power;

Facial ultrasound - Brazil's first 5 MHz facial
applicator with 9W power and 3cm² ERA;

8 channels for currents: HighForce
(1000Hz), Russian (2500Hz), MediumForce
(4000Hz), SoftForce (8000MHz), Drainage
and Electrolipolysis;

Exclusive HTM Smart ID system;

Pro Performance System;

INFO menu with tutorial
on use and care to make the
most of all the equipment's resources;

4 channels for currents: lontoporation
and MENS;

More than 100 pre-programmed protocols;

Complete line of accessories;

Sophisticated design with 8" touch screen display.

LOCALIZED FAT;
CELLULITE AND WATER RETENTION;
REJUVENATION AND STRETCH MARKS;
SKIN PERMEATION OF ACTIVE INGREDIENTS;
REHABILITATION AND ANALGESIA;
TISSUE REPAIR;
HELP IN MUSCLE STRENGTHENING (MUSCLE SAGGINESS).

ANVISA: N°80212480023

Ultra-K

Hibridi

Advanced technology that offers incredible results in body harmonization;

It has an applicator with a frequency of 40 KHz and 30W;

It features a revolutionary design that combines beauty and practicality in operation;

5" Touch Screen Display with full control of functions;

Pro performance system;

INFO menu with tutorial on use and care to make the most of all the equipment's resources;

New plug for Ultrasound applicator with easy fitting and high durability;

Low Frequency Ultrasound: 40kHz – ERA of 10cm² – 30W;

Complete line of accessories;

Easy-to-use interactive navigation;

Manual operation, with the possibility of saving new protocols;

Full range.

LOCALIZED FAT;
REDUCTION OF MEASUREMENTS;
REDUCTION OF CELLULITE.

ANVISA: N°80212480023

Low-frequency ultrasound

Treatment for localized fat and cellulite



Ultrasound and therapeutic currents

Compact hybrid platform for simultaneous therapies.

2 DUO MODE



Ultrasound and therapeutic currents;

Compact hybrid platform for simultaneous therapies;

1MHz and 3MHZ body ultrasound with higher output power: 63W and ERA of 21cm²;

FloatingHead® Technology;

Facial ultrasound - Brazil's first 5MHz facial applicator (optional), with output power: 9W and ERA of 30cm²;

4 channels for currents: HighForce (1000Hz), MediumForce (4000Hz), SoftForce (8000MHz), Drainage, Lipolysis, lonthoporation and MENS;

Possibility of carrying out individual therapies, combined therapies and simultaneous therapies - Exclusive DUO MODE.

LOCALIZED FAT;
CELLULITE AND WATER RETENTION;
REJUVENATION AND STRETCH MARKS;
SKIN PERMEATION OF ACTIVE INGREDIENTS;
REHABILITATION AND ANALGESIA;
TISSUE REPAIR;
MUSCLE STRENGTHENING.

ANVISA: N°8021280023

UltraFocus

HI-Focus

New body applicator model with 4 tip options:
10mm, 15mm, 20mm and 30mm in depth;

New facial applicator model with 3 tip options:
1.5mm, 3.0mm and 4.5mm depth;

Sensor for decoupling applicators from the skin
with audible alert, which minimizes operational
errors during application;

Automatic adjustment of parameters according to selection
of tip depth and application technique;

Stationary and dynamic application technique for
facial microfocused ultrasound;

Piezoelectric body shock waves with automatic adjustment
of parameters based on the definition of the treatment area;

Interactive navigation and intelligent selection
of treatment regions;

INFO menu and QR Code with access to a tutorial on
use and care for better use of all the equipment's resources;

Pro performance system;

8" touch screen display;

Full range;

Exclusive design.

LOCALIZED ADIPOSITY;
CELLULITE AND STRETCH MARKS
FACIAL AGING;
SAGGING SKIN.

ANVISA: N°80212480022

**Body-focused ultrasound,
body-piezoelectric shockwaves,
and facial-stationary and
dynamic microfocused
ultrasound**

Platform for facial lifting and
body lipomodeling.

**High-intensity focused
ultrasound (HIFU)**

Cutting-edge technology to
optimize results with
maximum precision.

High-intensity focused ultrasound (HIFU) equipment;

Non-invasive aesthetic treatments, allowing selective, precise and
controlled destruction of skin and/or adipose tissue;

Its transducer features a specific piezoelectric crystal, causing
the ultrasound beam to be emitted in the shape of a cone,
with a high concentration of energy at a specific focal point;

It is possible to manually adjust treatment
parameters in a practical and intuitive way;

Allows you to work with points, lines or multi-lines;

It has exclusive applicators - facial and body - light and easy to apply;

Cartridges with depth options up to 16mm;

Features revolutionary design;

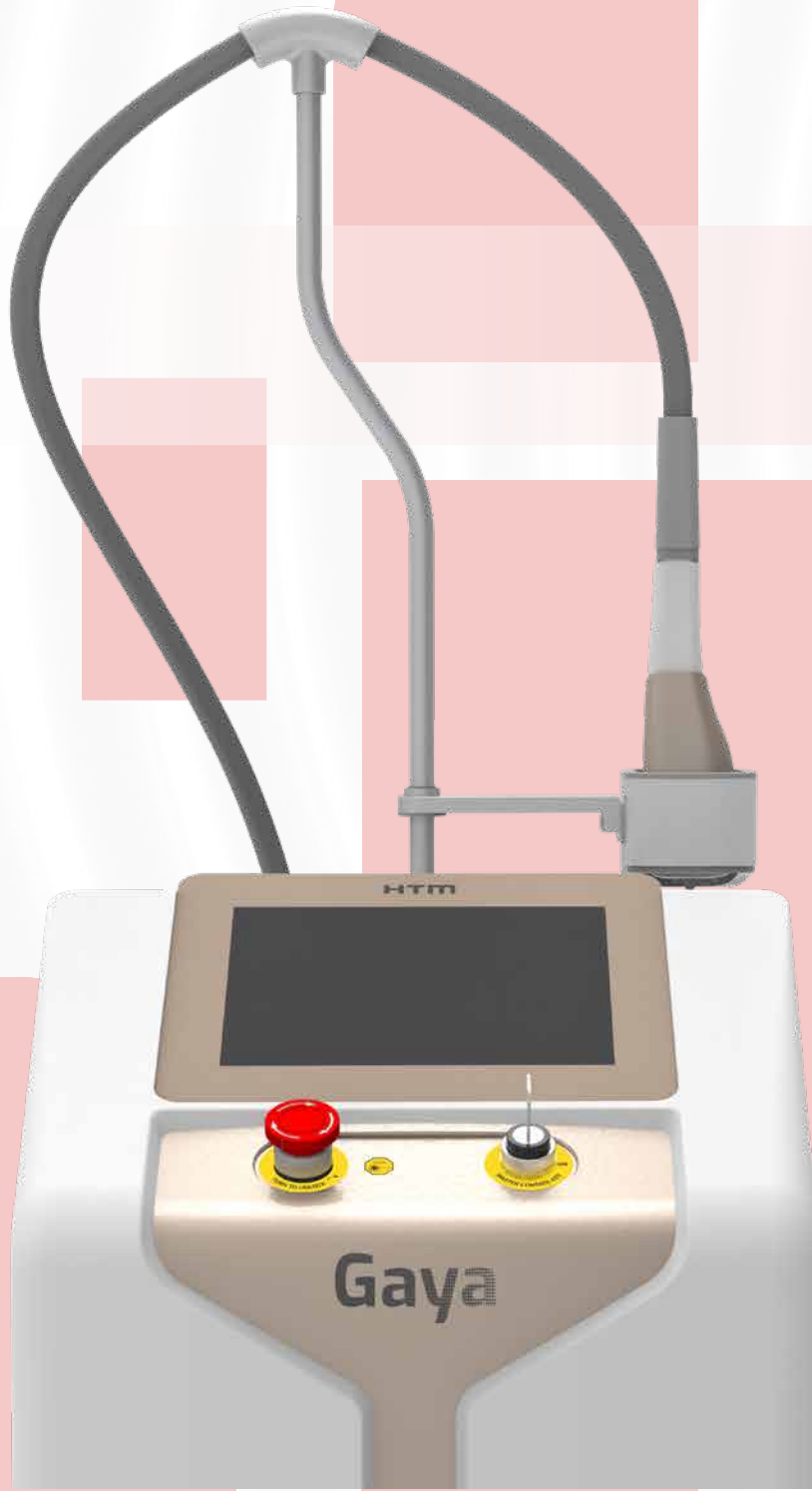
15.6" touch screen display with full control of functions in an
interactive menu with animations for better visualization.

18 month warranty;

ADIPOSITY;
CELLULITE;
STRETCH MARKS;
FACIAL AGING;
SAGGING SKIN.

ANVISA: N°80212480022





Gaya

Thulium Laser

High power,
maximum effectiveness
and visible results

GAYA is a high-power Thulium Laser with a wavelength of 1927nm and fully digital control for use in dermatological procedures aimed at treating tissue photodamage, epidermal and pigmented dermatological lesions. It has an affinity for the water chromophore and, therefore, there are no skin phototype restrictions;

It has a 10.4-inch touch screen display;

Intuitive, easy-to-use interface that provides complete visualization, providing greater precision and maintenance of pre-established treatment parameters.;

It has 15W of power;

Several pre-programmed protocols allowing remote triggering of the LASER beam using the actuation pedal;

TISSUE PHOTODAMAGE;
EPIDERMAL LESIONS;
PIGMENTED DERMATOLOGICAL LESIONS.

Included accessories

- 01 Power cable;
- 01 Operator's safety glasses;
- 01 Patient's safety glasses;
- 01 Foot pedal;
- 01 Interlock connector;
- 01 LASER manual applicator;
- 02 Master control switches;
- 01 40mm tip;
- 01 Roller tip;
- 01 Support rod for Laser manual applicator.

ANVISA: N°80212480031

Beauty Dermo

Beauty Dermo MAXX

Allows you to choose between treatments:
Vacuum therapy, cupping therapy, diamond peeling
and buttock pump*;

New key for cupping therapy;

New digital pressure sensor;

Vacuum operating mode: Continuous and Pulsed;

Offers the best vacuum therapy applicators:
body, face and hair*;

More than 20 pre-programmed protocols;

QR Code with access to the usage and care tutorial to
make the most of all the equipment's features.

LOCALIZED ADIPOSITY AND CELLULITE;
LYMPHATIC DRAINAGE;
REDUCTION OF FIBROSIS;
FACIAL AGING;
ANALGESIA AND RELAXING MASSAGE;
ACNE AND STRETCH MARKS.

ANVISA: N°80212480024

*some accessories for performing these techniques are optional.

Vacuum therapy and cupping therapy

Multifunctional vacuum therapy and
cupping therapy platform for facial,
body and hair use.

Vacuum therapy, cupping therapy, pressotherapy and phototherapy

Advanced multifunctional
technology of
vacuum therapy,
cupping therapy,
pressotherapy
and phototherapy.



Allows you to choose between treatments: Vacuum LED,
Vacuum Therapy, Phototherapy, Pressotherapy, Cupping Therapy,
Diamond Peeling and Buttock Pump*;

New key for Cupping Therapy, with a special and
selective suction system for applying suction cups;

Vacuum operating mode: Continuous and
Pulsed (5 to 50 pulses/min);

New digital pressure sensor with variable negative pressure
adjustment from -1.5kPa to -80kPa* (*equivalent to -600mmHg);

Positive pressure adjustment for Pressotherapy up to 250mmHg;

Features leg accessory with 6 air chambers, arm accessory with 6 air
chambers and abdomen accessory with 4 air chambers;

It offers the best vacuum therapy applicators:
body, face and hair (*some accessories for performing
these techniques are optional)*;

Locking and unlocking system to prevent
inadvertent use by unauthorized persons;

LED Test Device: Checks the LED emission
of the Vacuum LED applicator;

INFO menu and QR Code with access to tutorial on use and care
for better use of all the equipment's resources;

More than 90 pre-programmed protocols and
possibility of recording new ones;

Exclusive design with new digital pressure sensor;

5" touch screen display;

Easy-to-fit, high-durability medical standard plug;

Full range;

18 month warranty;

LOCALIZED ADIPOSITY AND CELLULITE;
LYMPHATIC DRAINAGE;
FIBROSIS;
ANALGESIA;
RELAXING MASSAGE;
VENOUS STASIS;
LYMPHOEDEMA AND EDEMA;
ACNE, STRETCH MARKS AND FACIAL AGING;
ALOPECIA AND MELASMA;
TISSUE REPAIR;
PHOTODYNAMIC THERAPY.

ANVISA: N°80212480024

*some accessories for performing these
techniques are optional;

Stim Care

Stimulus-R

Chains

Innovative portable electrostimulator for aesthetics.



TENS, FES, HighForce (1000Hz), Russian (2500Hz), Lipolysis, Galvanic, Microgalvanic and MENS;

2 channels for chains;

28 pre-programmed body and facial protocols;

Easy-access top outlets;

High-resolution, high-contrast color OLED display;

MUSCLE STRENGTHENING;
ANALGESIA AND FUNCTIONAL REHABILITATION;
EDEMA DRAINAGE;
SKIN PERMEATION OF ACTIVE INGREDIENTS;
LOCALIZED FAT AND CELLULITE;
TISSUE REPAIR.

ANVISA: N°80212480027

Chains

Complete multiplatform electrostimulation.



TENS, FES, HighForce (1000Hz), Russian (2500Hz), MediumForce (4000Hz), SoftForce (8000Hz), Drainage, Lipolysis, Galvanic, Microgalvanic and MENS;

10 channels for biphasic currents and 2 channels for polarized currents;

46 pre-programmed protocols;

Easily accessible front outputs;

Highly durable medical standard plug;

Current for electroacupuncture.

CELLULITE;
LOCALIZED FAT;
MUSCLE SAGGING;
SKIN PERMEATION OF ASSETS;
WATER RETENTION;
TISSUE REPAIR;
PHYSICAL REHABILITATION;
ANALGESIA.

ANVISA: N°80212480011

1 and 3 MHz, 21W of power and 7cm² ERA;

24 pre-programmed protocols;

Intelligent programming of application time calculation (3MHz);

Connection for combination therapy.

CELLULITE;
LOCALIZED FAT;
WATER RETENTION;
TISSUE REPAIR;
ANALGESIA;
PHONOPHORESIS;
REHABILITATION.

ANVISA: N°80212480001

Sonic Compact 1-3 MHz



Microcontrolled
digital ultrasound

High technology in
portable ultrasound.

3 MHz, 24W of power and ERA of 8cm²;

Intelligent programming of application time calculation;

Automatic configuration of ultrasonic intensity according to the adipose layer;

Connection for combined therapy;

11 pre-programmed protocols.

CELLULITE;
LOCALIZED FAT;
PHONOPHORESIS;
WATER RETENTION;
TISSUE REPAIR;

ANVISA: N°80212480001



Microcontrolled
digital ultrasound

High technology in
portable ultrasound.

Sonic Compact 3 MHz



Ultrasound and
therapeutic currents

Innovative
intelligent system for
combination therapy.

Sonic Compact MAXX

Body ultrasound: 1 and 3 MHz, 24W power and ERA of 8cm²;

Facial ultrasound: 5MHz, 9W of power and ERA of 3cm² (optional);

Currents: TENS, FES, HighForce (1000Hz), Microgalvanic, MENS, Interferential 2kHz and 4kHz, Galvanic, Russian Current (2500Hz), MediumForce (4000Hz), SoftForce (8000Hz) and Lipolysis;

2 channels for chains;

150 pre-programmed protocols.

ANALGESIA AND REHABILITATION;
CELLULITE AND LOCALIZED FAT;
STRETCH MARKS AND TISSUE REPAIR;
MUSCLE STRENGTHENING;
REJUVENATION;
WATER RETENTION;
PERMEATION OF ASSETS.

ANVISA: N°8021280001

Állos
O₃ Therapy



Ozone therapy

Discover
the possibilities
of Ozone Therapy
for quality of life
and well-being.

Ozone generating equipment for dentistry
and aesthetics;

Microcontrolled equipment with digital
parameter controls;

5" touch screen display;

Automatic flow control according to
concentration;

Equipment enabled with all HTM Match
functionalities;

Concentration range from 0 to 100ug/ml;

Automatic calculation of dose and
quantity of syringes;

PRO CLEAN system.

ANVISA: N°80212489006
*see manual

Automatic dual voltage (1st and only in Brazil);

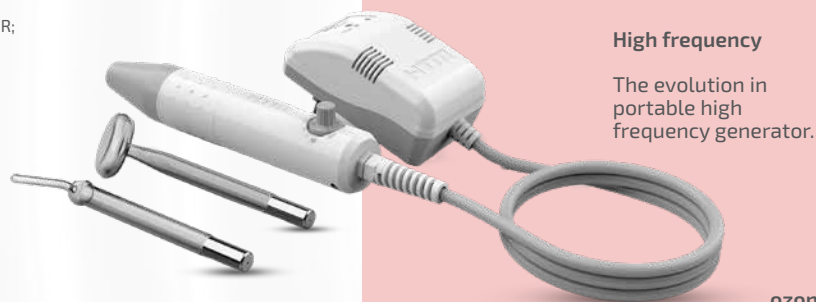
Long-range connection cable: offers greater freedom without restrictions;

Electrode holder (optional);

Includes carrying bag;

Universal fit for use of different electrodes.

SKIN TREATMENTS;
HEALING AND TISSUE REPAIR;
PODIATRY TREATMENTS.
ANVISA: N°80212480003



High frequency

The evolution in portable high frequency generator.

Revolutionary design, which combines beauty and practicality in operation;

Operates on both mains voltages - dual voltage (110V ~/220V ~);

Digital control of the reservoir water level, preventing overflows;

Intelligent heating system that monitors the boiler temperature, providing greater safety and agility when starting the operation;

Rod with 360° rotating emitting tip and silicone grip area for greater operator comfort;

Microcontroller with precise digital adjustment of parameters;

Compartment for inserting flavourings.

ACNE;
ALOPECIA;
AROMATHERAPY;
HYDRATION.
ANVISA: N°80212489004

Beauty Face

Water vapor, ozone vapor*, aromatherapy, photobiomodulation and chromotherapy

Skin cleansing, aromatherapy and light therapies with high technology, practicality and safety.

Water vapor, ozone vapor* and aromatherapy

Skin cleansing and aromatherapy with high technology, practicality and safety.

*business name



Beauty Steam

Beauty Steam MAXX

Revolutionary design, which combines beauty and practicality in operation;

Includes LED cluster for chromotherapy and photobiomodulation, allowing the generation of different colors;

More than 50 pre-programmed protocols;

Operates on both mains voltages - dual voltage (110V ~/220V ~);

Digital control of the reservoir water level, preventing overflows;

Intelligent heating system that monitors the boiler temperature, providing greater safety and agility when starting the operation;

Rod with 360° rotating emitting tip and silicone grip area for greater operator comfort;

Microcontroller with precise digital adjustment of parameters;

Compartment for inserting flavourings.

ACNE;
ALOPECIA;
AROMATHERAPY;
CHROMOTHERAPY;
HYDRATION;
REJUVENATION;
TISSUE REPAIR.

ANVISA: N°80212489004



Needle RF



Fractional radiofrequency and robotic microneedling

Robotic
microneedling
radiofrequency,
advanced
and precise
technology.

8" Touch Screen Display with full control of functions and interactive menu with animations for better visualization;

Versatile applicator for facial and body use, light and practical;

Precise control of needle depth: adjustable from 0.2 mm to 3.5 mm in 0.1 mm steps, allowing personalized treatments;

Dynamic linear motor technology, ensuring energy release only after the needle is fully inserted into the treatment zone;

Advanced vacuum injection technology in the needle tips, ensuring precision when inserting the needles into the skin;

Remote activation of radiofrequency (minimally or non-invasive) via button on the applicator or automatic adjustment on the equipment, facilitating application;

150 W power for superior results;

Full Range, ensuring complete and effective treatment;

Full Range (Bivolt).

Included Accessories

- 1 Power cord
- 1 Body/facial applicator
- 1 Towel
- 3 Microneedling RF tips with 64 tips
- 2 Microneedling RF tips with 25 tips
- 1 Microneedling RF tip with 10 tips
- 1 Support for microneedling RF applicator

ACNE SCARS;
STRETCH MARKS;
TISSUE SAGGING;
EXPRESSION LINES;
REJUVENATION.

ANVISA: N°80212480015

New Tecartherapy and Radiofrequency system;

Revolutionary "Hands Free" technique: transforming technology into a new sensory experience;

Exclusive tecartherapy applicators specially developed for the perfect fit of the hands: ideal for the "hands on" technique;

Treatments in the aesthetic and rehabilitation areas;

5" touch screen display;

INFO menu with tutorial on use and care for better use of all the equipment's resources;

Intelligent programming with targeted protocols according to the therapeutic modality and treatment region;

Innovative Pro Performance System, designed with user experience in mind;

Exclusive applicator for intimate techniques with remote activation and intensity adjustment;

Multifrequency Technology: 0.6 MHz, 1.2 MHz and 2.4 MHz;

Multi-Layer Treatment: automatic frequency variation, reaching different tissue depths;

Different emission modes: continuous and pulsed;

Different options of capacitive and resistive tips for Radiofrequency: monopolar, bipolar, tetrapolar, hexapolar and decapolar;

Tecar therapy tips in different sizes: 30, 50, 70 mm.;

New plug for easy fitting and high durability;

Exclusive design;

Full range.

SKIN SAGGING;
FACIAL AGING AND WRINKLES;
ACNE SCARS;
STRETCH MARKS;
CELLULITE;
LOCALIZED ADIPOSITY;
ACNE VULGARIS;
INTIMATE AESTHETICS;
INCONTINENCE;
URINARY;
ANALGESIA;
REHABILITATION.

ANVISA: N° 80212480015

Tecare

EFFECT

Tecartherapy and radiofrequency

Challenge your senses with the new generation of Tecartherapy.

Radio frequency

Compact, high-performance radio frequency.

Compact radiofrequency for body, facial and intimate treatments;

Rapid reach of therapeutic temperature / guaranteed maintenance of therapeutic temperature even in large areas;

Multifrequency technology: 0.6 MHz, 1.2MHz and 2.4 MHz;

Monopolar, bipolar and multipolar application / resistive and capacitive tips;

Innovative Pro Performance System, designed with the user's experience in mind.

SKIN SAGGING;
FACIAL AGING AND WRINKLES;
ACNE SCARS;
STRETCH MARKS;
CELLULITE;
LOCALIZED ADIPOSITY;
ACNE VULGAR;
INTIMATE AESTHETICS.

ANVISA: N° 80212480015



HTM MATCH!

An advanced experience in managing your equipment through IoT technology. HTM Match is an application that offers a series of benefits that will improve your service routine.

Find the app
HTM MATCH!
on the main platforms

